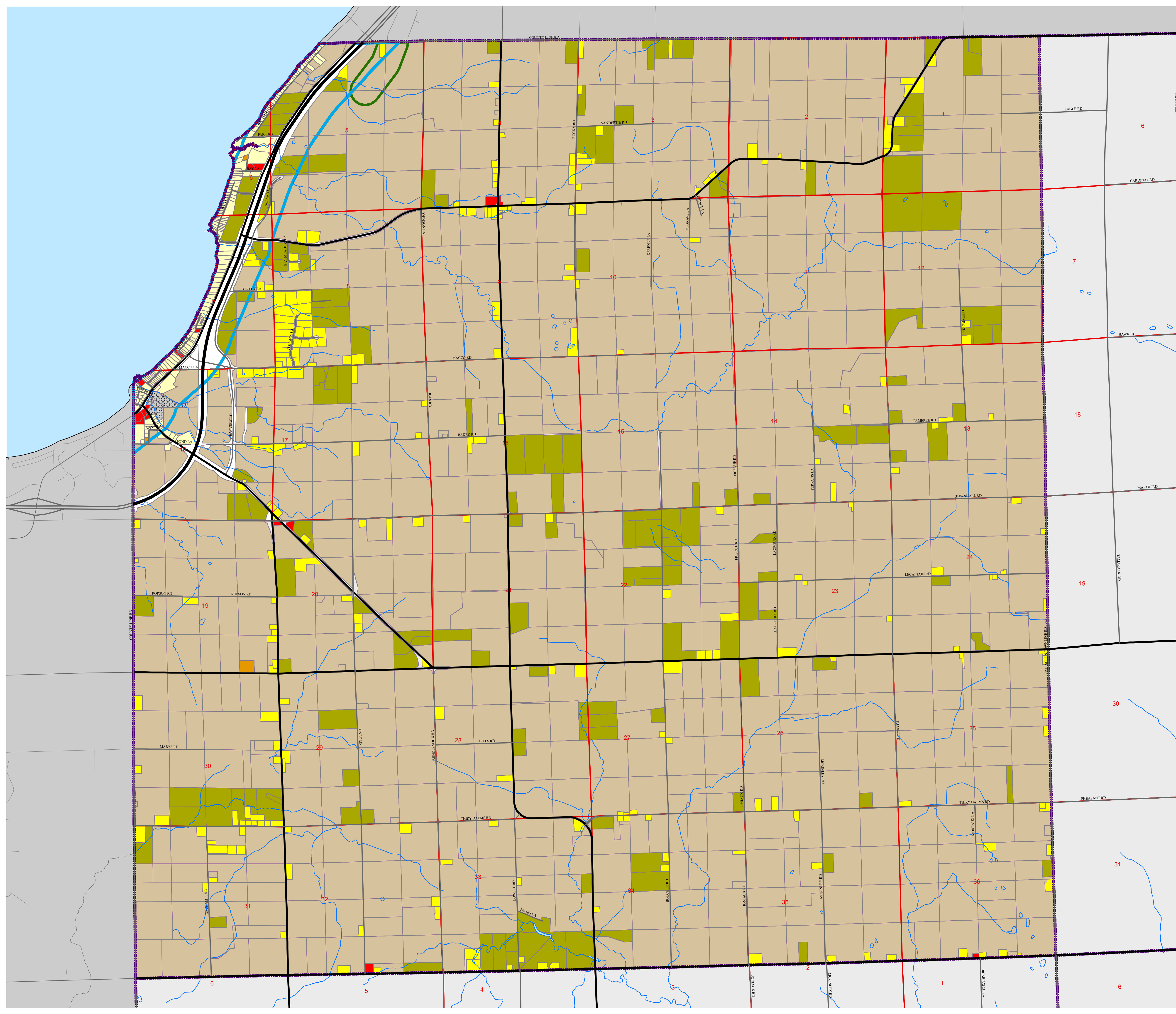


Farmland Preservation Zoning Map for Town of Red River Kewaunee County, Wisconsin



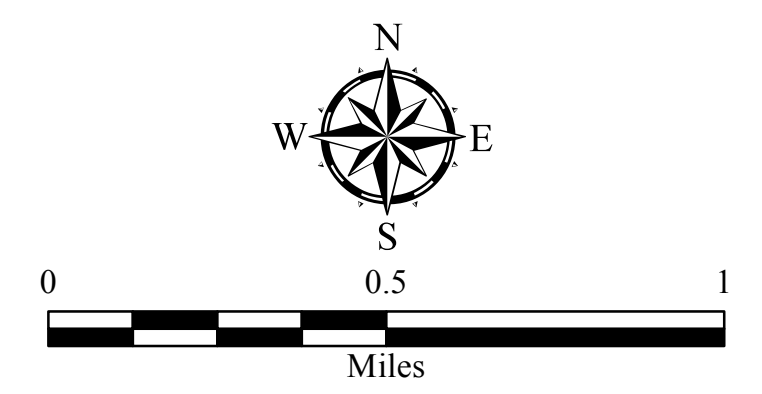
Zoning Districts

- A-1 - Prime Agricultural*
- LE - Large Estate Residential
- RS - Single-Family Residential
- RR - Rural Residential
- RM - Multiple Family Residential
- B-1 - Business/Commercial
- I-1 - Industrial District
- LCO - Lowland Conservancy**
- NEO - Niagara Escarpment Overlay
- CTH DK - Highway Corridor Overlay
- PDO - Planned Development Overlay

Note: Not all zoning districts are mapped.
 * Note: This district certified as a farmland preservation zoning district under chapter 91, Wis. Stats.
 ** Note: See Kewaunee County Shoreland Zoning Ordinance for provisions.

Base Map Features

- Community Boundary
- State Highways
- County Highways
- Local Roads
- Parcel Line
- Section Line
- Surface Water



CERTIFICATION:
 I, The undersigned Town Chairperson of the Town of Red River, Kewaunee County, Wisconsin, do hereby certify that this "Farmland Preservation Zoning Map for Town of Red River, Kewaunee County, Wisconsin" was approved as part of "The Town of Red River Zoning Ordinance, Kewaunee County, Wisconsin" certified by DATCP on September 1, 2017 and adopted by the Town Board on September 13, 2017 and is available in the office of the Town Clerk. Any amendments to the Zoning Map shall take effect upon adoption by the Town Board, and filing of proof of posting or publication thereof in the office of the Town Clerk.

ATTESTATION:

Town Chairperson _____ Date _____ Town Clerk _____ Date _____

Revision Date	Initials

Map 10.1
 Date: October 11, 2017
 Produced By: Joshua Schedler
 Source: WisDOT, 2014; Kewaunee County, 2015, 2016; Town of Red River, 2017; Bay-Lake Regional Planning Commission, 2017.

